

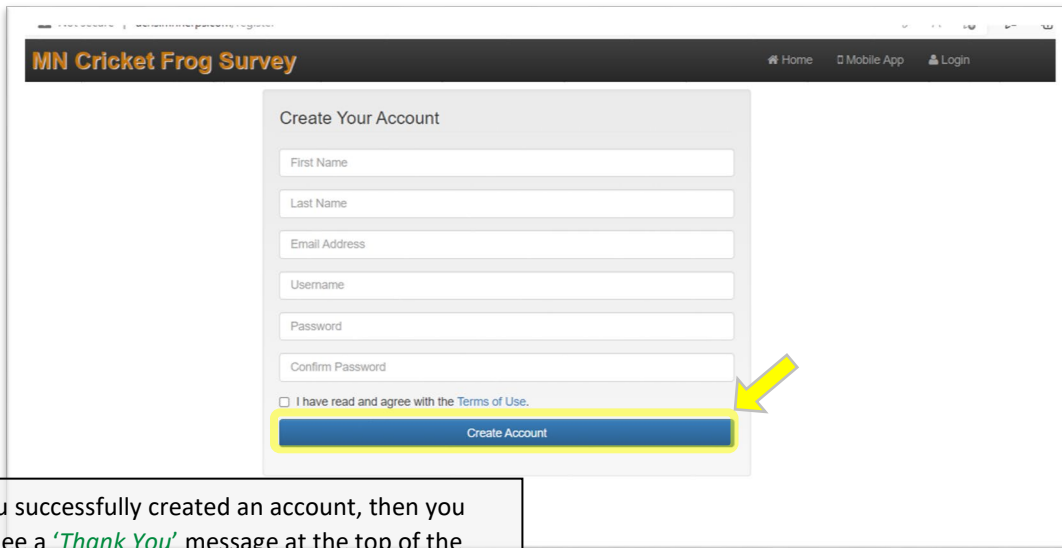
MN Cricket Frog Community Science Survey

MobileMapper App Install Instructions (V 1.0)

RELEASED (date 06-17-2022)

Steps to Create an Account:

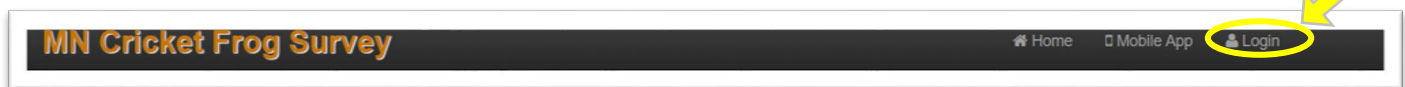
1. Visit the following website to create a *MN Cricket Frog Survey* account: <http://acris.mnherps.com/register>.
➤ Note: You may complete Steps 1 through 6 from a desktop computer or a mobile device.
2. Enter your first and last name; enter your email address; create a **username** and **password**; check the box indicating you read the Terms of Use; and select the Create Account button. [Shown below]



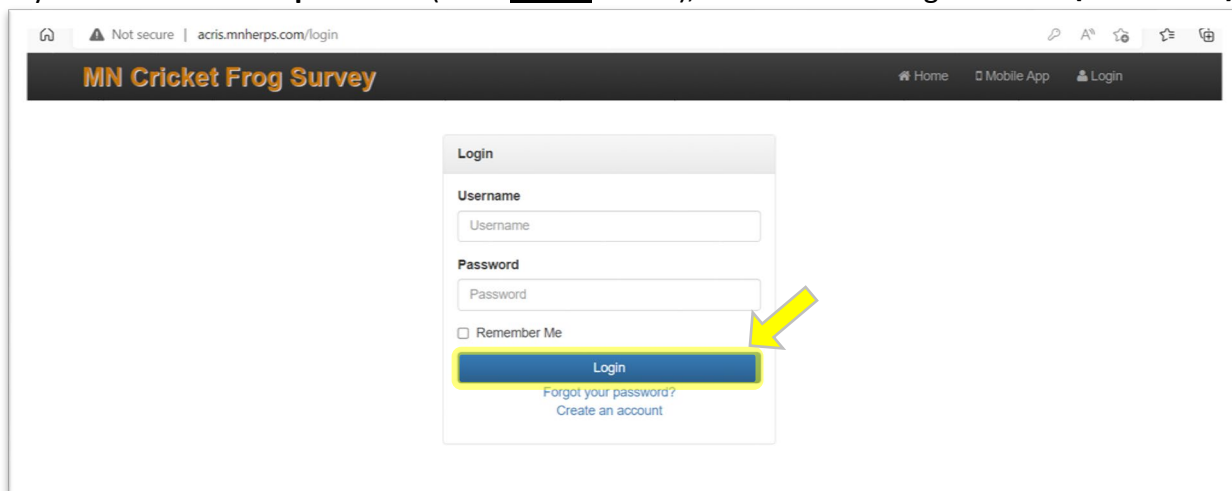
If you successfully created an account, then you will see a *'Thank You'* message at the top of the page.

Thank you for registering. You can now login.

- ❖ If you did not receive a 'Thank You' message, then you will be prompted to make corrections.
- ❖ Once you successfully create an account, then select **Login** in the header (see the upper right-hand corner of the webpage). [Shown below]



3. Enter your **username** and **password** (from Step 2 above), and select the Login button. [Shown below]

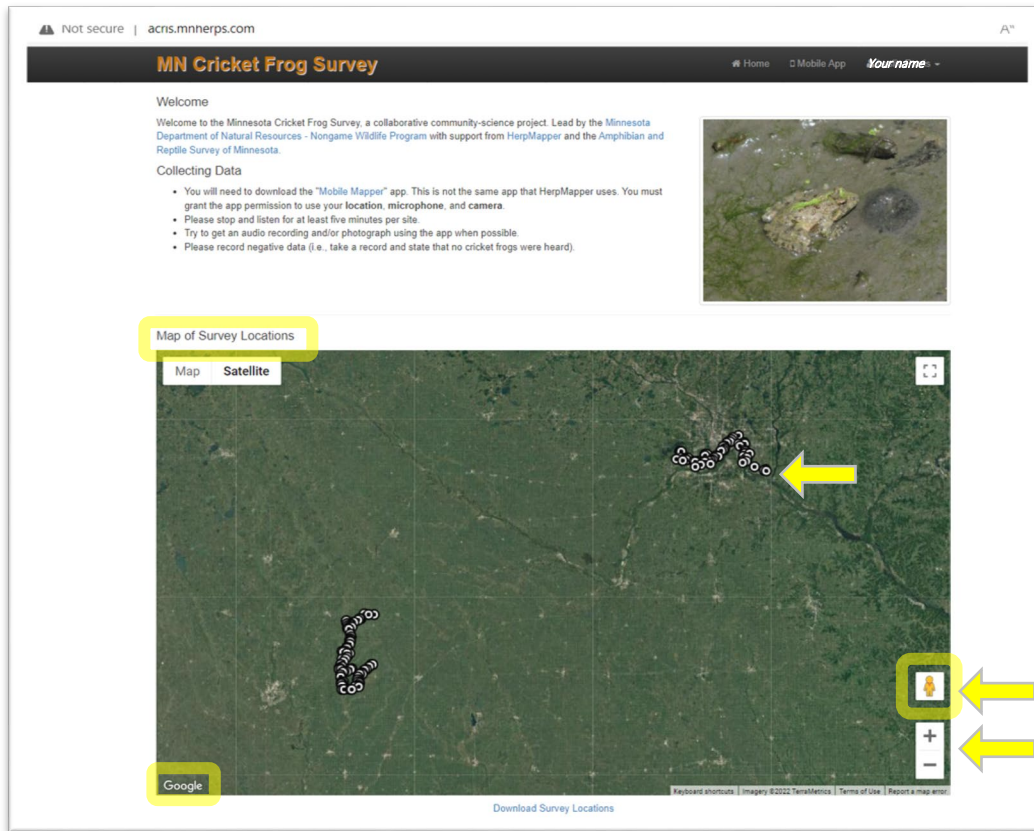


- ❖ If you forgot your password, then select [Forgot_your_password?](#) link and follow the prompts.

MobileMapper App Instructions (con't)

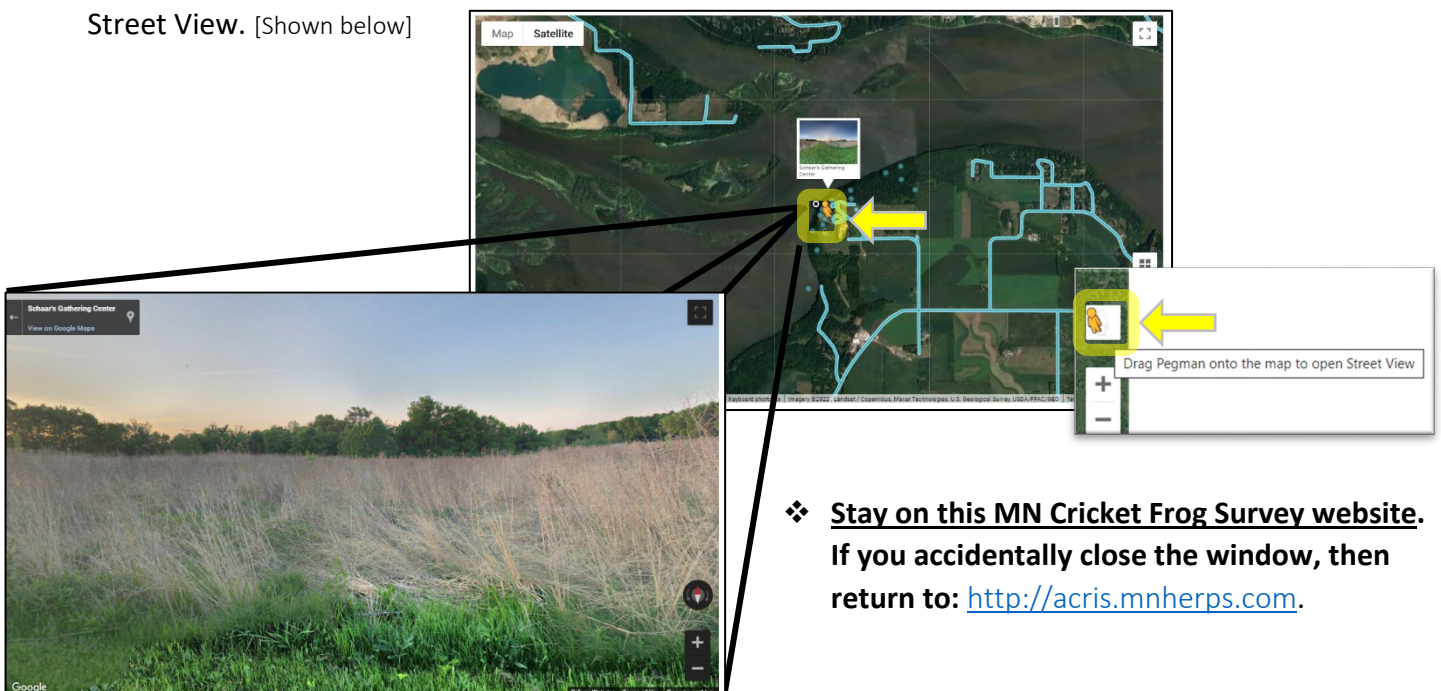
4. Welcome to your MN Cricket Frog Survey account!

- ❖ If you are using a desktop computer, then your screen will look similar to the image below on the *left*. If you are using a mobile device, then your screen will look similar to the image below on the *right*.



Note, Apple and Android devices may appear slightly different. The above image is from an Android device.

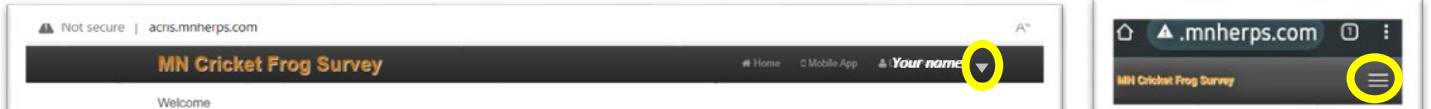
- **NOTE:** A Google map showing *optional* Survey Locations [📍] will appear. You have the option to zoom in [+] and zoom out [-]. You may also drag the Pegman symbol [🧑] onto the map to see a Google Street View. [Shown below]



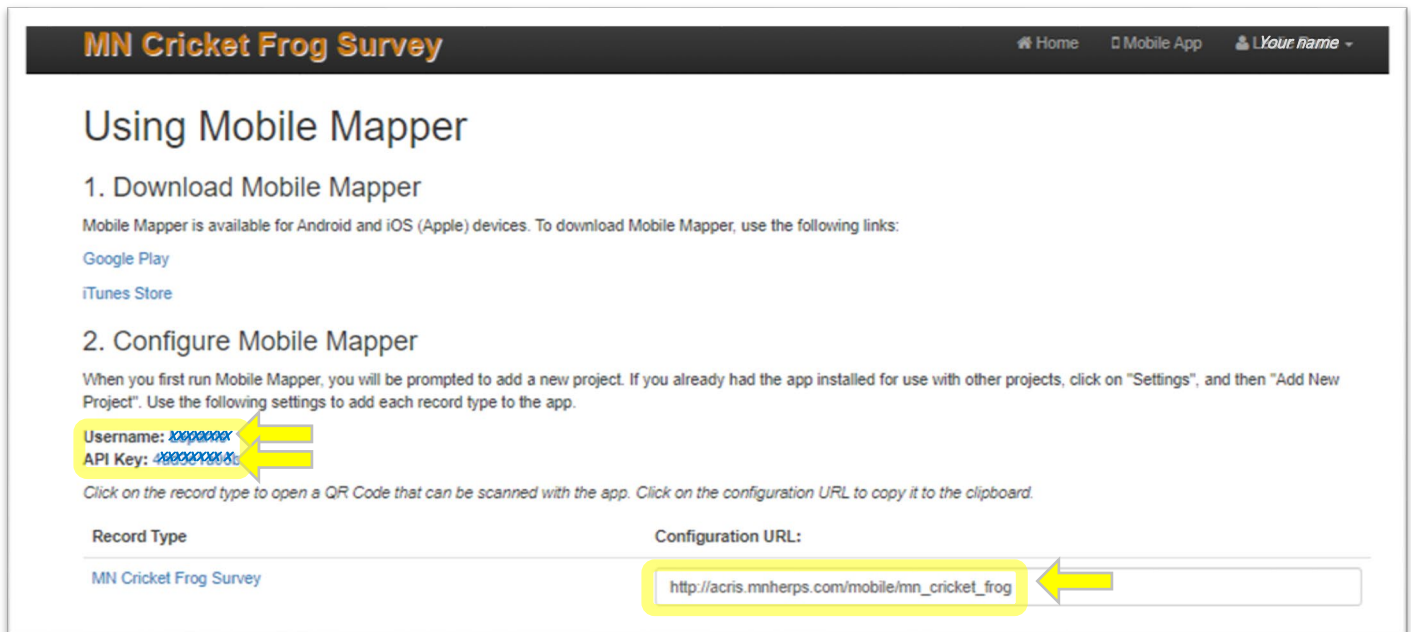
- ❖ **Stay on this MN Cricket Frog Survey website.** If you accidentally close the window, then return to: <http://acris.mnherps.com>.

MobileMapper App Instructions (con't)


5. From the current Welcome webpage, follow the directions below to go to the Mobile App webpage:
- ❖ IF on a desktop computer or Apple device, then click the down arrow [▼] beside your name in the upper right corner and select the **MOBILE APP** option from the drop down menu - as shown below on the *left*. IF on an Android device, then click on the three bars in the upper right corner and select the **MOBILE APP** option from the drop down menu - as shown below on the *right*.



6. With pen and paper, record the following information provided on the Mobile App webpage:
- ❖ “Username”
 - ❖ “API Key”
 - ❖ “Configuration URL”



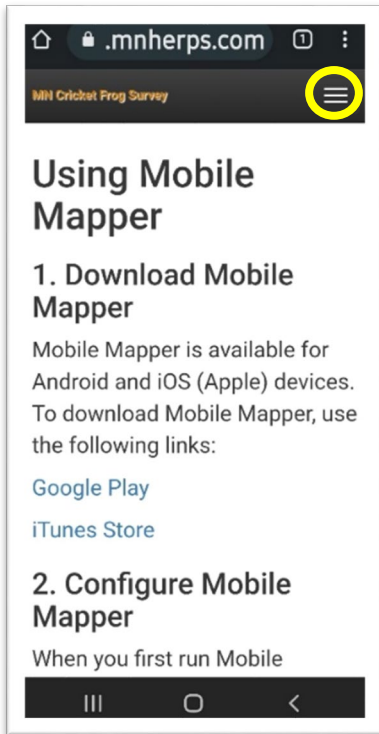
IMPORTANT:

- IF Steps 1-6 were completed on a desktop computer , then **proceed to Step 7**.
 - IF Steps 1-6 were completed on a mobile device , then **skip Step 7 and proceed to Step 8**.
-

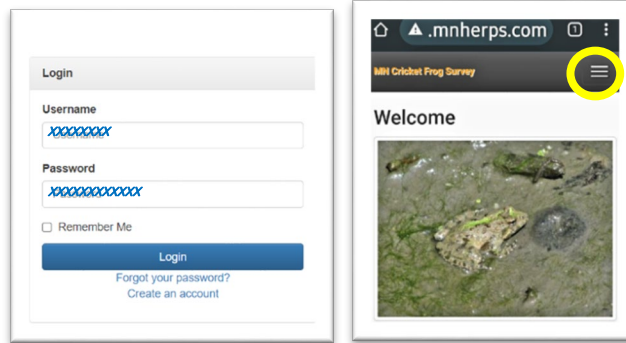
MobileMapper App Instructions (con't)

Steps to Install and Setup App:

7. Now, switching from a desktop computer to a mobile device (either a cellphone or tablet), navigate to the following website on your mobile device: <http://acris.mnherps.com/mobile>.

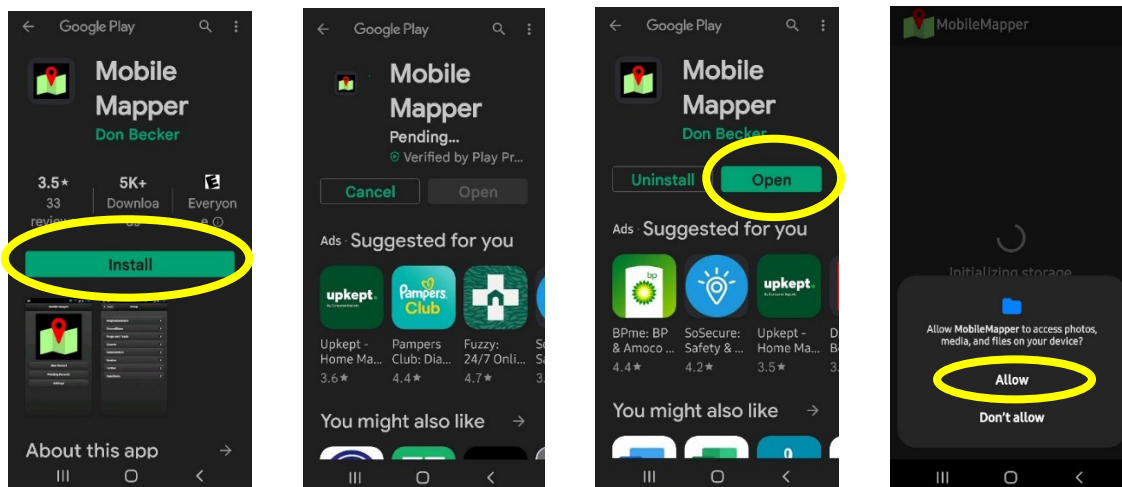


- a) Select the three bars in the upper right corner of your mobile device screen to view a drop down menu, and select the **LOGIN** option from drop down; and
- b) Enter your **username** and **password** (from Step 2 above), and select the **Login** button. (You have the option to check the box beside “Remember Me”, if using a trusted device.).
- c) The Welcome webpage will appear; and lastly, return to the Mobile App page using the drop down menu.



8. Continue on your mobile device, and follow the directions below to install the MobileMapper App.

- ❖ Navigate to either (a) [Google Play](#) for Android device or (b) [iTunes Store](#) for Apple device and search for MobileMapper App (by Don Becker).
- ❖ Follow the prompts to **INSTALL**, and **OPEN**, and then select **Allow** to give necessary permissions to the MobileMapper App to participate in the *MN Cricket Frog Survey*.

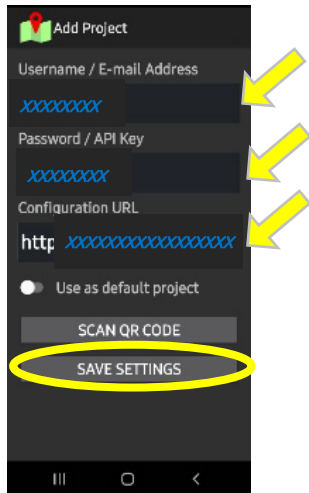


Note, Apple and Android devices may appear slightly different. The above images are from an Android device.

MobileMapper App Instructions (con't)

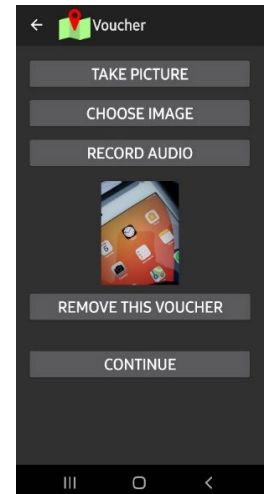
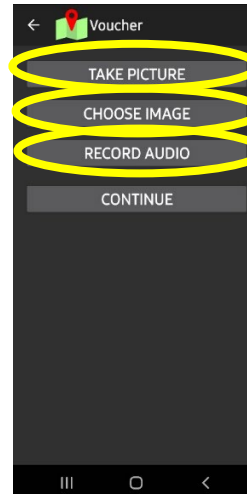
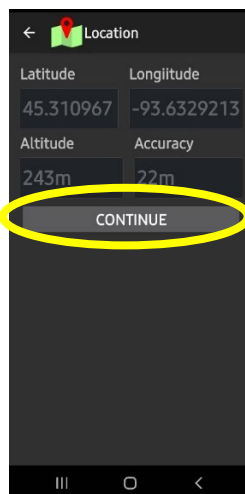
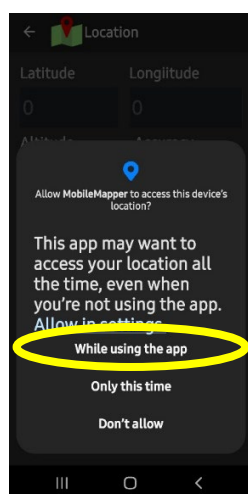
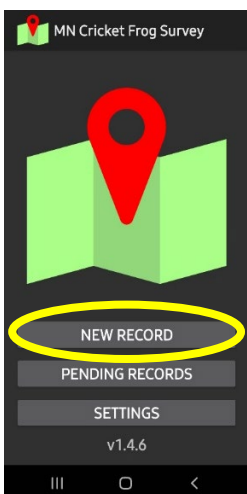
9. The MobileMapper App will open to the screen shown below. (NOTE: Add Project will appear in the header at top)

- ❖ Enter the recorded information from Step 6 above (“Username”, “API Key”, and “Configuration URL”), and then select the **SAVE SETTINGS** button.



- ❖ The images shown below are a series of App screens and selections that will be available to you during your data collection.

➤ Note, a separate document will provide instructions for MN Cricket Frog Survey data collection.



Note, Apple and Android devices may appear slightly different. The above images are from an Android device.

<END>